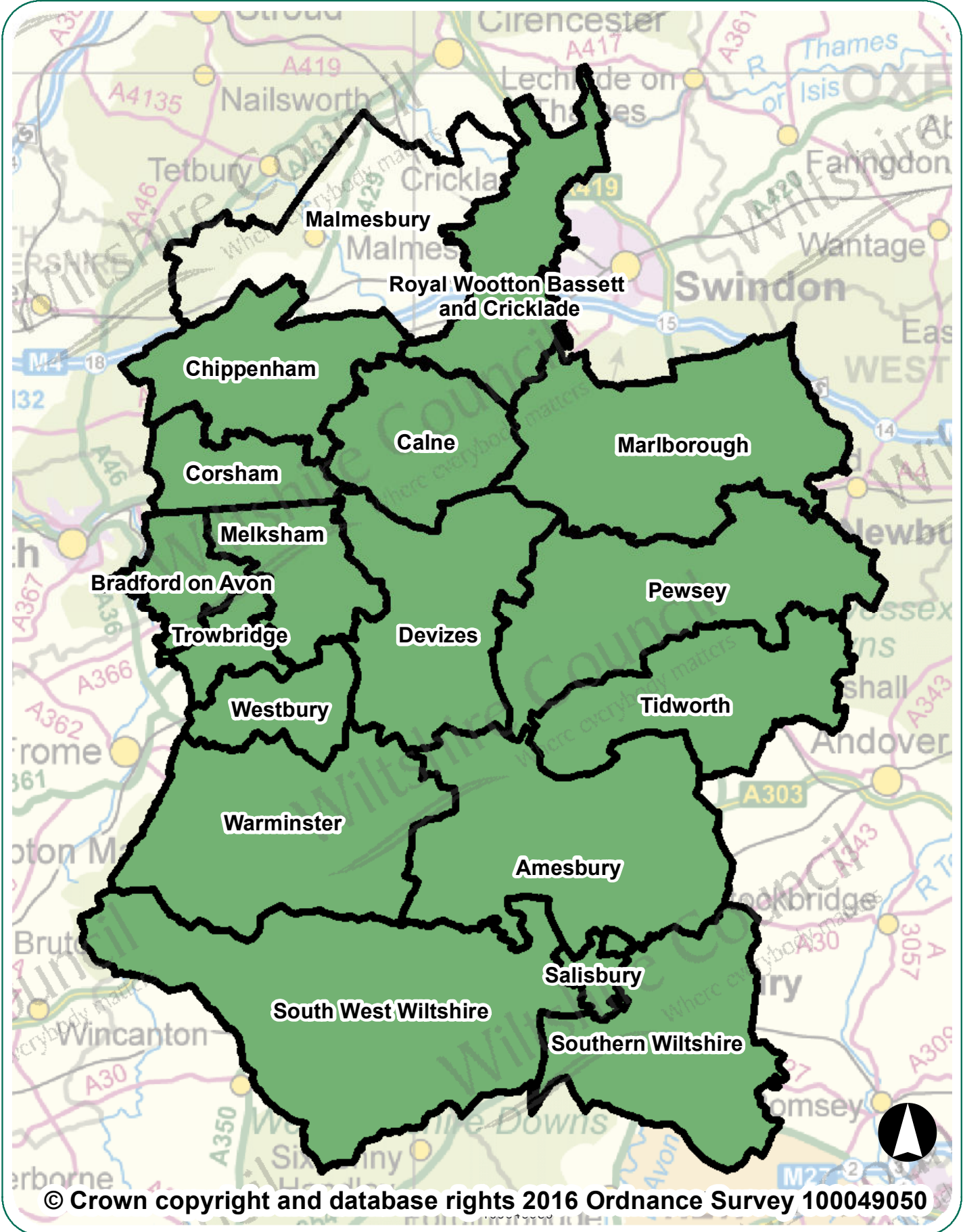


# Malmesbury Area Board Highway Information



# Malmesbury Area Board Highway Information

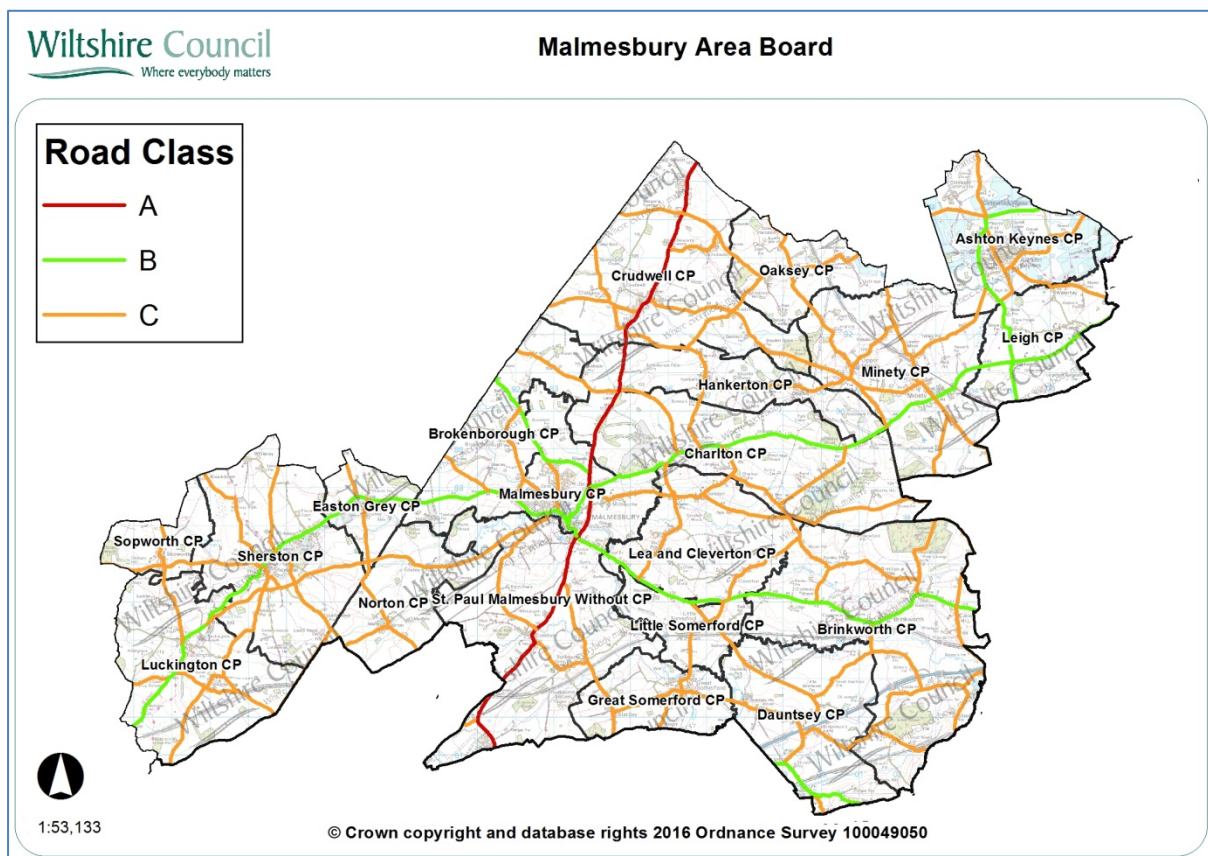
## Introduction

This document summarises highway information for your area board. It lists the recent highway and related work carried out by Wiltshire Council, including the road resurfacing carried out during the first two years of the 'Local Highways Investment Fund 2014 – 2020', and includes other information which should be of interest.

Further information on the Council's activities is available at the website [www.wiltshire.gov.uk](http://www.wiltshire.gov.uk). If you wish to report a specific highway issue please use My Wiltshire. Details are provided at the end of this document.

## Parishes in the community area are:

Brokenborough , Great Somerford, Little Somerford, Dauntsey, Brinkworth, Lea and Cleverton, Charlton, Hankerton, Crudwell, Oaksey, Minety, Sopworth, Luckington, Sherston, Easton Grey, Leigh, Norton, Malmesbury, St Paul Malmesbury W/O, Ashton Keynes



## Network statistics in your area

### Road length by class

Road type	Urban (km)	Rural (km)
A Class Roads	3.73	14.43
B Class Roads	18.5	39.37
C Class Roads	31.66	166.82
Unclassified Roads	47.47	40.09
<b>Total</b>	<b>101.36</b>	<b>260.71</b>
	<b>Overall Total</b>	<b>362.07</b>

The council categorises its roads to reflect their importance. This enables an effective assignment of highway inspection frequencies and maintenance standards.

### Highway assets in your area

The council keeps an inventory of its highway assets in order to assist planning its highway maintenance. Important statistics relating to your board area are:

Asset Type	Measure
Carriageway	362.07 km
Footways adjacent to road	71 km
Footways (linked)	4.51 km
White road centre lines	175 km
Road kerbs	112 km
Grass verge (maintained)	606 km
Drainage grips	6,302 number
Drainage pipe grips	625 number
Drainage gullies	3, 611number
Road signs	2,368 number
Street lights	1, 574 number

## **Major highway maintenance**

### **Road resurfacing**

Wiltshire has over 3,000 miles of road. The Council's 'Local Highways Investment Fund 2014 – 2020' is making a massive investment to improve the condition of the roads in Wiltshire over six years. The programme of work started in April 2014, and is designed and supervised by the Council's consultants Atkins, with the work carried out by our main highway contractors Tarmac and Eurovia.

The work carried out in the first two years of the programme has improved a considerable number of the roads in previously poor condition. The locations of sites treated in recent years are shown below.

### **Carriageway repairs**

As well as resurfacing roads other works are undertaken to make localised repairs to keep the roads safe. The works undertaken in your area since 2014 are shown on the map below.

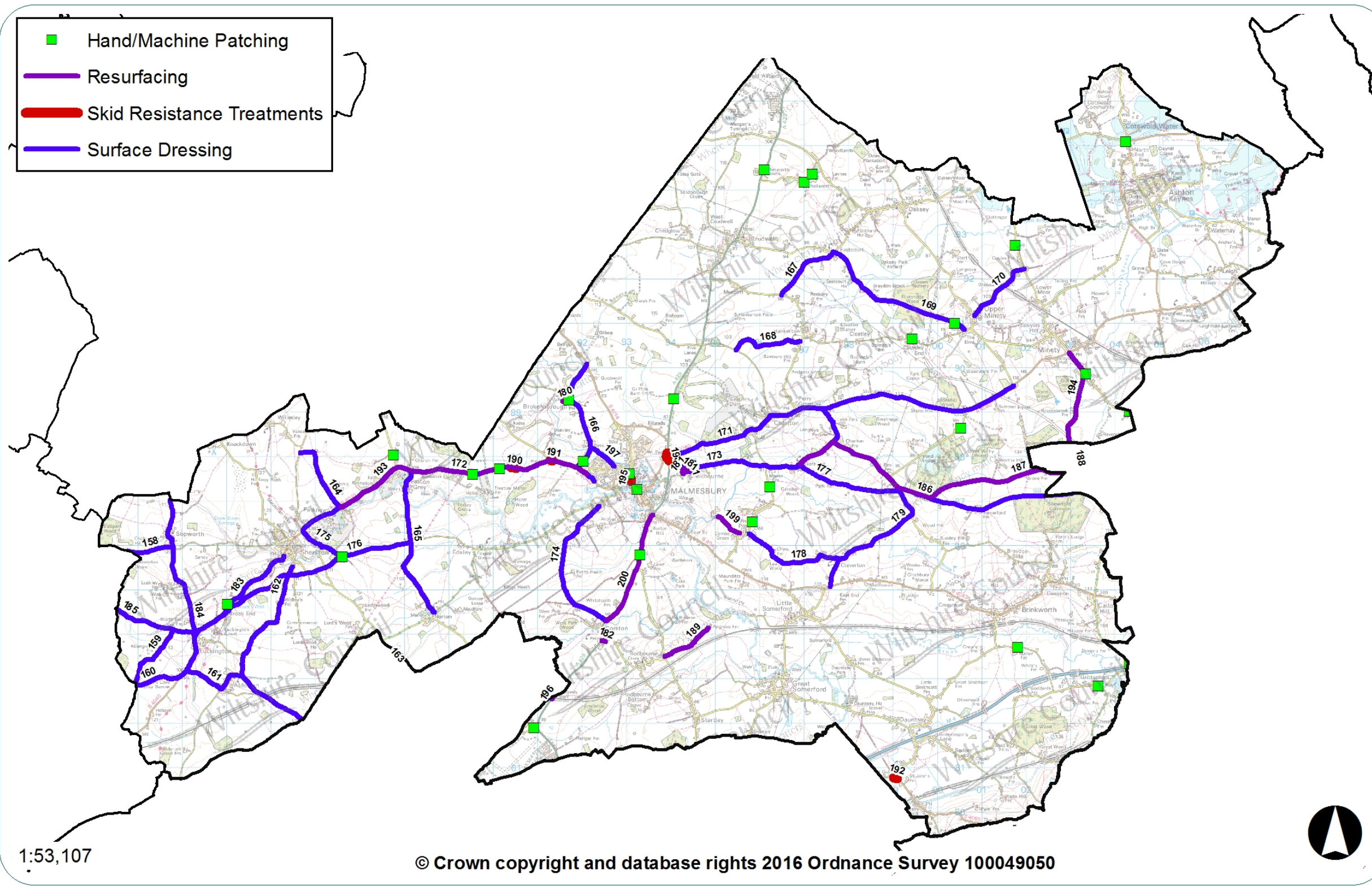
The wet winter and flooding in previous years has resulted in substantial damage to the road network. It is important that serious defects are treated promptly to keep the roads safe. The Council currently operates four Pothole teams that respond to urgent issues to keep the roads safe.

Plan showing major maintenance schemes & hand/machine patching sites completed since 2014



Malmesbury Area Board

- Hand/Machine Patching
- Resurfacing
- Skid Resistance Treatments
- Surface Dressing



1:53,107

© Crown copyright and database rights 2016 Ordnance Survey 100049050

**Major maintenance completed since 2014**

No	Location	Works
158	Un-named road links in to Sopworth Road Junction	Surface Dressing
159	Allengrove Lane	Surface Dressing
160	Bristol Road B4040	Surface Dressing
161	Unnamed road Alderton	Surface Dressing
162	Thomson's Hill	Surface Dressing
163	Hill Hayes Lane, Hullavington	Surface Dressing
164	Pinkney Court Farm	Surface Dressing
165	Unnamed road from Easton Grey to Norton (junction Honey Lane)	Surface Dressing
166	Park Lane, Brokenborough	Surface Dressing
167	Junction north of Hankerton to junction in Eastcourt	Surface Dressing
168	Junction east of Five Lanes east to junction in Hankerton	Surface Dressing
169	Flisteridge Road to Silver Street, Minety	Surface Dressing
170	Level Crossing Road, Minety	Surface Dressing
171	B4040 Charlton Road from Malmesbury to Minety junction Dog Trap Lane	Surface Dressing
172	B4040 Easton Town to speed limit change at Malmesbury	Surface Dressing
173	C7 Milbourne Lane to Moor Lane, Charlton Heath	Surface Dressing
174	Common Road, Corston	Surface Dressing
175	From B4040 Easton Town junction to next junction	Surface Dressing
176	Unnamed road heading towards Foxley Road, Foxley	Surface Dressing
177	Park Lane, Garsdon	Surface Dressing
178	Cresswell Lane, Lea and Cleverton	Surface Dressing
179	Swindon Road from B4042 junction to Hill Farm	Surface Dressing
180	Church Lane, Brokenborough	Resurfacing
181	Milbourne Park, Malmesbury	Resurfacing

Malmesbury Area Board Highway Information

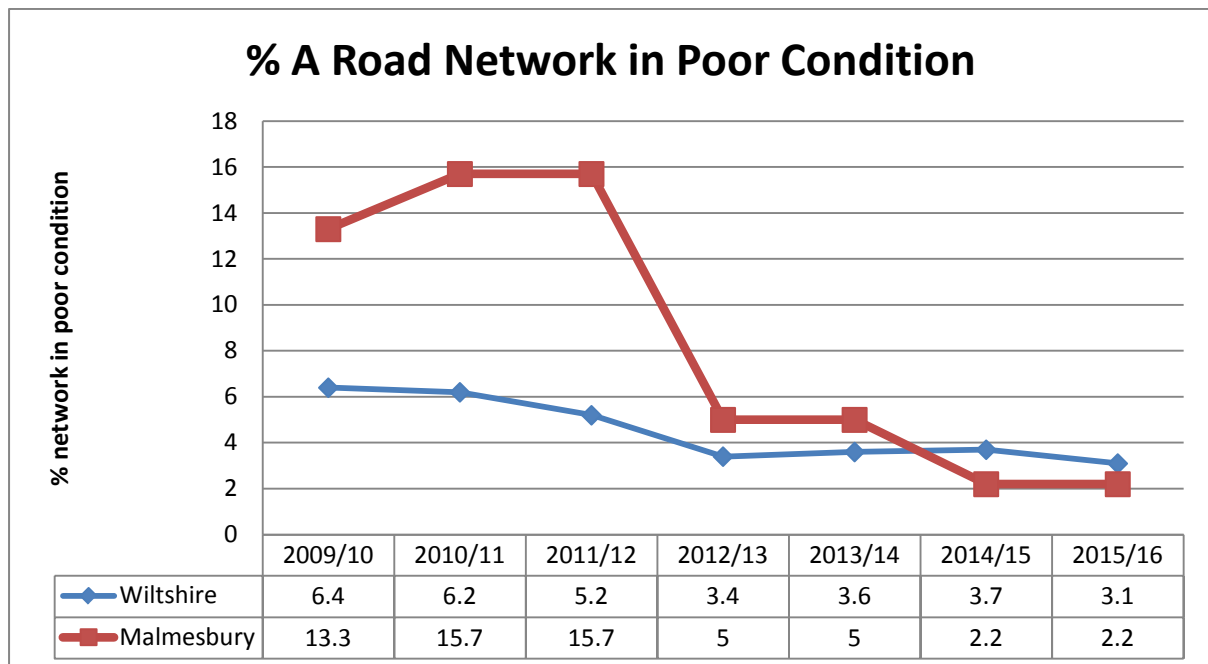
No	Location	Works
182	Radnor Park, Corston	Resurfacing
183	C8 B4040 Sherston Road	Surface Dressing
184	Sopworth Road	Surface Dressing
185	Cherry Orchard Lane, Luckington	Surface Dressing
186	Queen Street, Brinkworth	Surface Dressing
187	Junction at Pond Plantation east to crossroads north of Queen Street	Surface Dressing
188	Ravenroost Road to Queen Street crossroads	Surface Dressing
189	Angrove Lane, Rodbourne	Resurfacing
190	Twatley Farm To C14	Skid Resistance Improvements
191	C14 East To 30mph Malmesbury	Skid Resistance Improvements
192	C45 Swallett Gate Se To 40 Mph Dauntsey Lock	Skid Resistance Improvements
193	Malmesbury to Sherston	Resurfacing
194	Gorsdon to Minety	Resurfacing
195	Gloucester Road, Malmesbury Pedestrian Crossing	Skid Resistance Improvements
196	A429 South of Corston	Resurfacing
197	Malmesbury - Church Lane, Brokenborough	Surface Dressing
198	A429 at Whychurch Roundabout, Malmesbury	Skid Resistance Improvements
199	Crab Mill Lane, Lea	Resurfacing
200	A429 Corston to Malmesbury	Resurfacing

## Highway conditions and technical surveys in your area

Roads deteriorate in condition because of various factors, including traffic volumes, ground conditions, and weather and drainage issues. Technical surveys of the condition of the highway network are carried out annually and the information is used to help prioritise schemes. Road safety is the priority, and maintaining adequate skid resistance on the busy high speed roads is vital.

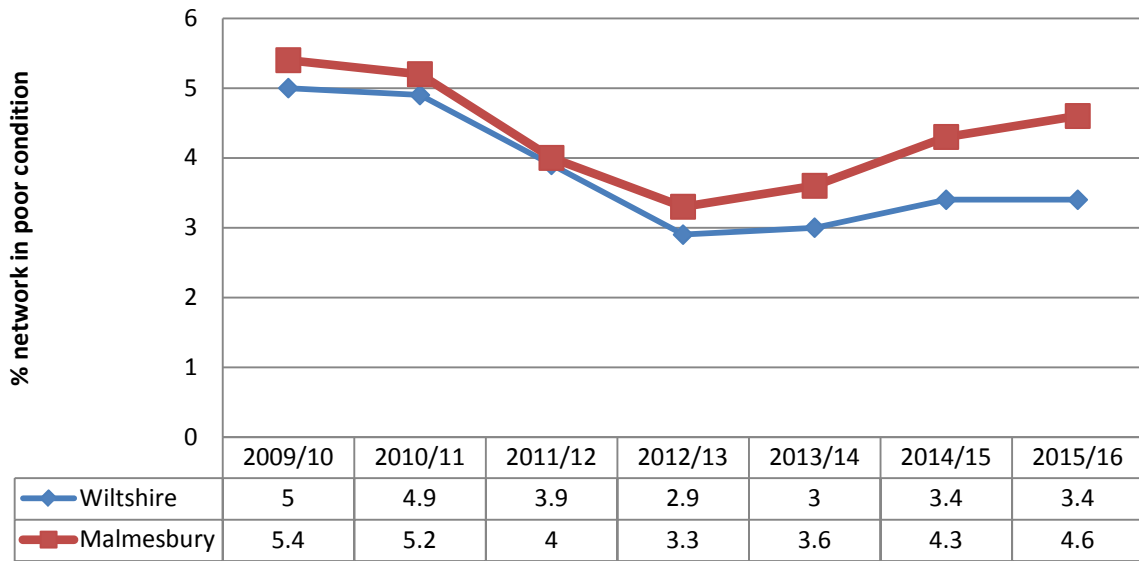
The surveys include the use of a vehicle equipped with lasers and cameras to record road surface condition, which allows us to report on road conditions to the Department for Transport and to prioritise maintenance work. Other surveys include measuring skid resistance on the busier roads.

The road conditions in your area are shown below. It should be noted that low numbers are good because it indicates that less road length should be considered for treatment. More detailed information is shown in Appendix A.

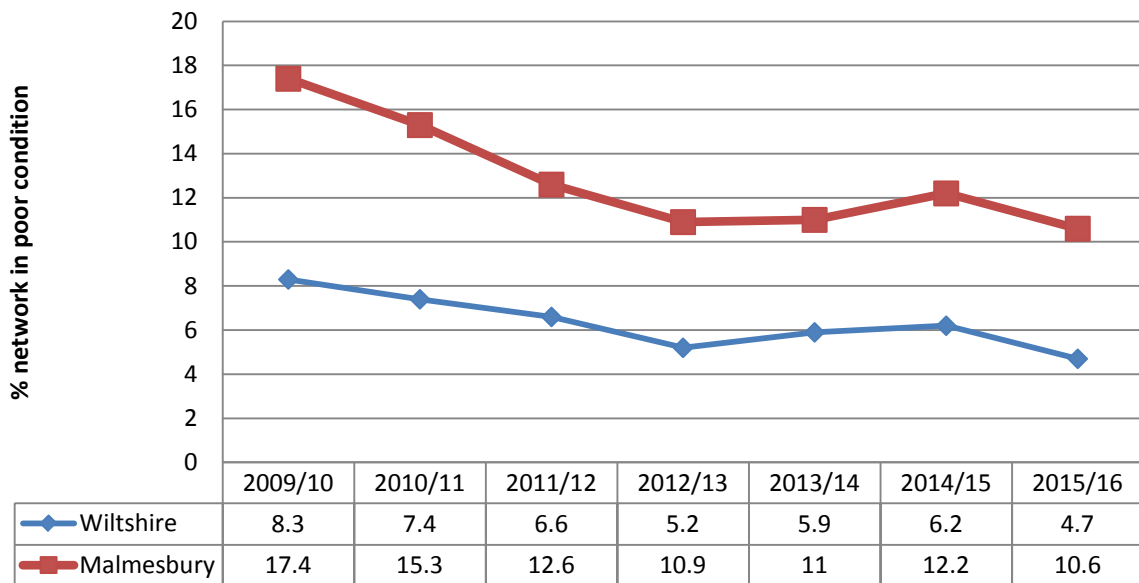


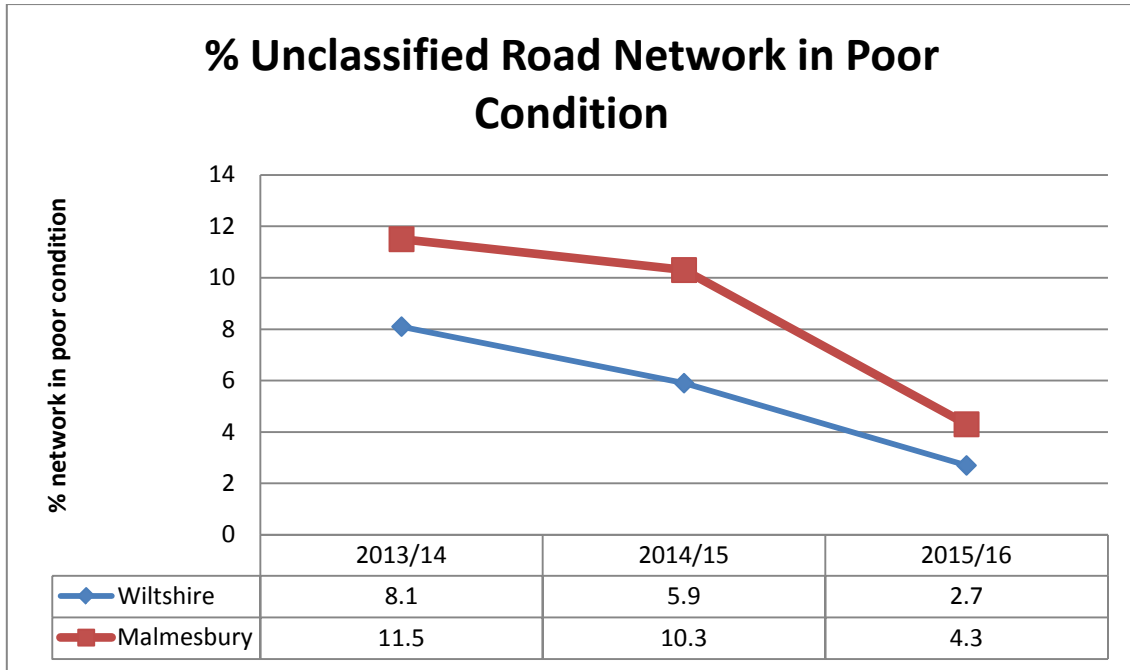


### % B Road Network in Poor Condition



### % C Road Network in Poor Condition





## Integrated transport, bridge and drainage works

### Integrated transport

The Council's traffic engineering team work with our contractors to plan and deliver a range of projects to the local community, most notably through the Area Boards and Community Area Transport Groups (CATGs). The schemes range in size and complexity from simple sign installation through to more complex road safety and improvement schemes.

### Bridges

The Council regularly inspects its bridges and other highway structures. There is a programme of renewal and refurbishment works to keep them in good condition, as well as having to respond to damage caused by collisions.

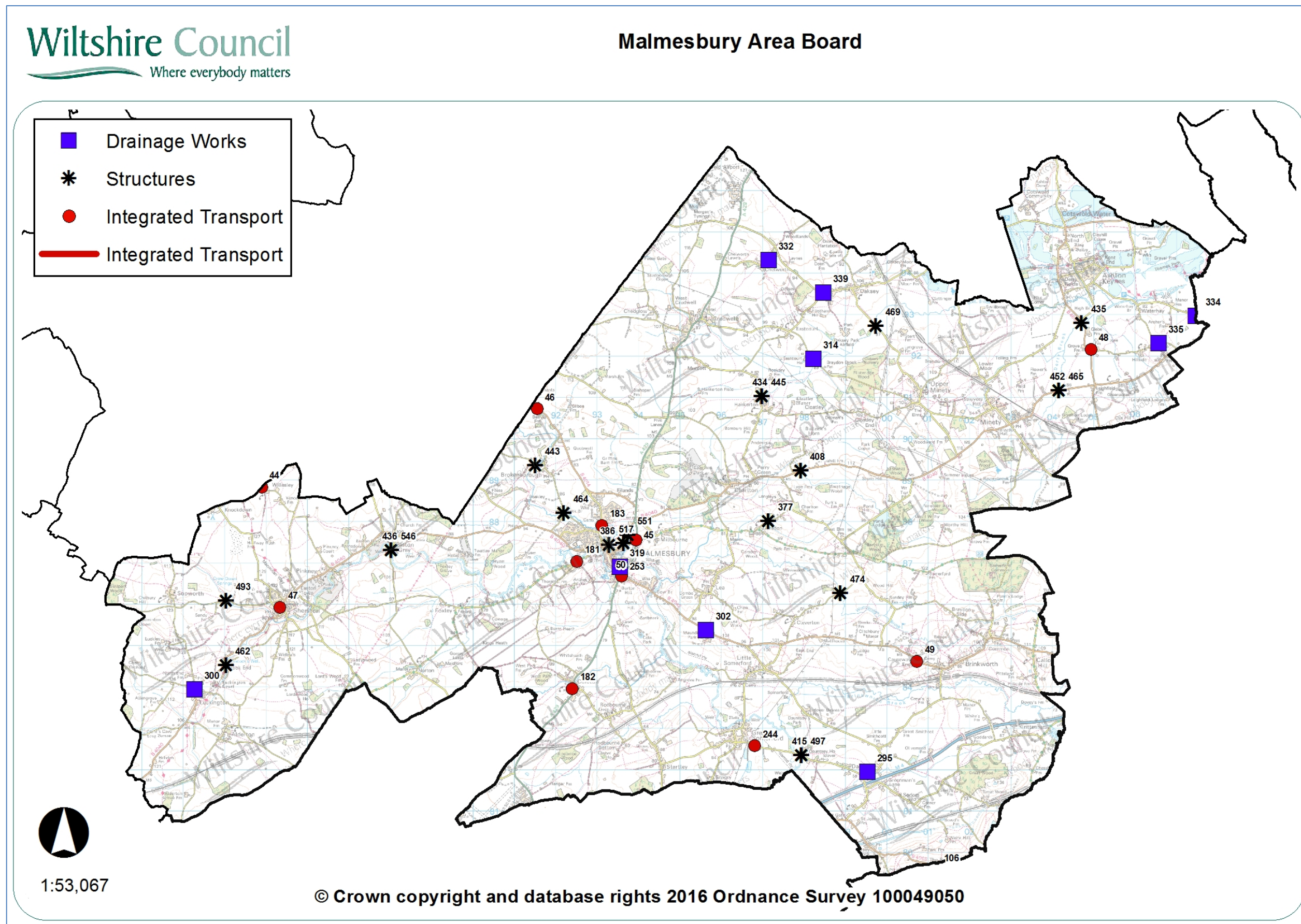
### Drainage

Programmes of drainage investigations, repairs and flood alleviation schemes are undertaken throughout the year, but the flooding in recent years has meant that there has been a need to respond immediately to flooding issues, as well as dealing with previously identified problem sites. The drainage improvement and flood alleviation work is co-ordinated through the Council's Operational Flood Working Groups that include the Environment Agency, Wessex Water, other organisations and stakeholders.

### Recent work in your area

The Integrated Transport, Bridge and Drainage schemes carried out in your area since 2015 are listed below.

Plan showing completed integrated transport, bridge and drainage schemes since 2015



**Integrated transport schemes since 2015**

No	Location	Description
181	Common Road/Foxley Road	Junction improvements
182	Corston	The Street - signs and lines
183	Tetbury Hill	School wig wags
244	Dauntsey Road, Great Somerford	Completion of works
253	Malmesbury Priory roundabout	Road markings and zig zags
45	A429 Blicks Hill / Holloway	Pedestrian Improvements
46	B4014 by County Boundary	Byway carriage sign
47	B4040 Sherston High street	Coloured surfacing
48	B4696 Road to Ashton Keynes junction with Swan Lane	Signs & lines
49	B4042 Brinkworth Causeway end	Signs & lines
50	Malmesbury Priory roundabout	Road marking amendments

**Bridge schemes since 2014**

No	Location	Description
546	Easton Grey	RTC masonry repairs
551	Malmesbury	Stone wall repair
377	Lea & Cleverton	Brickyard Bridge, Lea and Cleverton. Re-point Arch
386	Malmesbury	Abbey Mill bridge, Malmesbury. Relay copings
408	Charlton	Maggots Bridge. Parapet repair following RTC
415	Dauntsey	Dauntsey Church concrete repairs
434	Hankerton	Hankerton Bridge, Deck Replacement Works
435	Leigh	Swans Lane 1st bridge Ashton Keynes. Arch barrel repair
436	Easton Grey	Easton Grey Bridge, Re-point parapets and re-fix copings
443	Brokenborough	Westerley bridge, vegetation clearance
445	Hankerton	Vegetation clearance Hankerton Bridge
452	Leigh	Sambourne Bridge Vegetation Clearance
462	Luckington	Hancocks Well Bridge Br R1-39, General masonry repairs
464	Brokenborough	Back bridge, Malmesbury, Repoint Arch Barrel
465	Leigh	Arch Extension to Sambourne Bridge, Leigh
469	Oaksey	Oaksey Ford Bridge Concrete repair to parapet edge beam
474	Lea & Cleverton	Woodbridge, Lea & Claverton
493	Sherston	Stan Bridge parapet reconstruction
497	Dauntsey	Dauntsey Church Bridge, Maintenance Works
517	Malmesbury	Holloway South Bridge Road Traffic Collision 14/12/2015

**Drainage works since 2015**

<b>No</b>	<b>Location</b>	<b>Description</b>
295	Malmesbury	Ditching and Restoring watercourses
300	Malmesbury	Surface water upgrade
302	Malmesbury	Road widening drainage improvements safety scheme
314	Malmesbury	Clearance of silt
319	Malmesbury	Clearance of silt
332	Malmesbury	Drainage investigations and test holes
335	Malmesbury	New Gully and connecting pipe work
339	Malmesbury	Restoration of existing system to improve collection

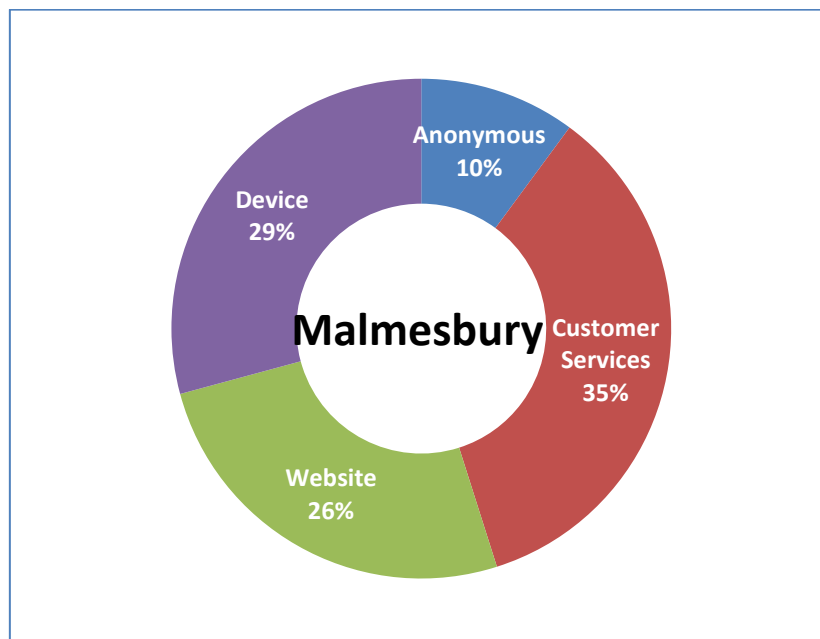
## My Wiltshire



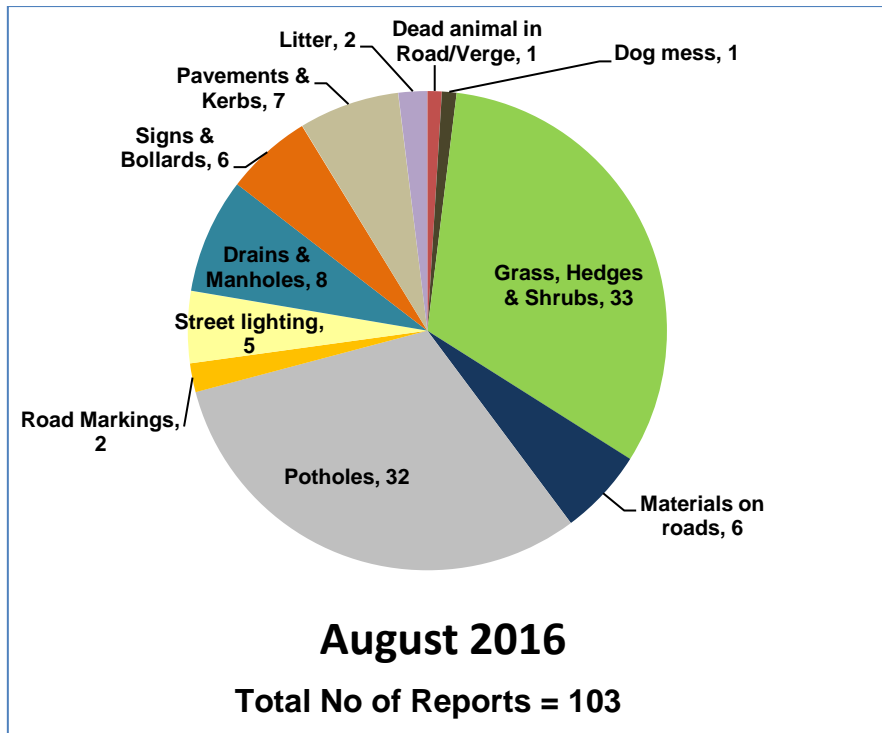
My Wiltshire provides an easy way to report highway issues, including using the Council's website. We have an app so you can report on the go using your smartphone. The My Wiltshire app is available to download at both the [App Store](#) (for iPhones and iPads), from [Google Play](#)<sup>™</sup> (for Android phones) and Windows Store. You can attach information such as photos or videos and pinpoint the location of your report using the mapping software on your phone.

A summary of recent reports in your area is shown below, and further details are shown in Appendix B.

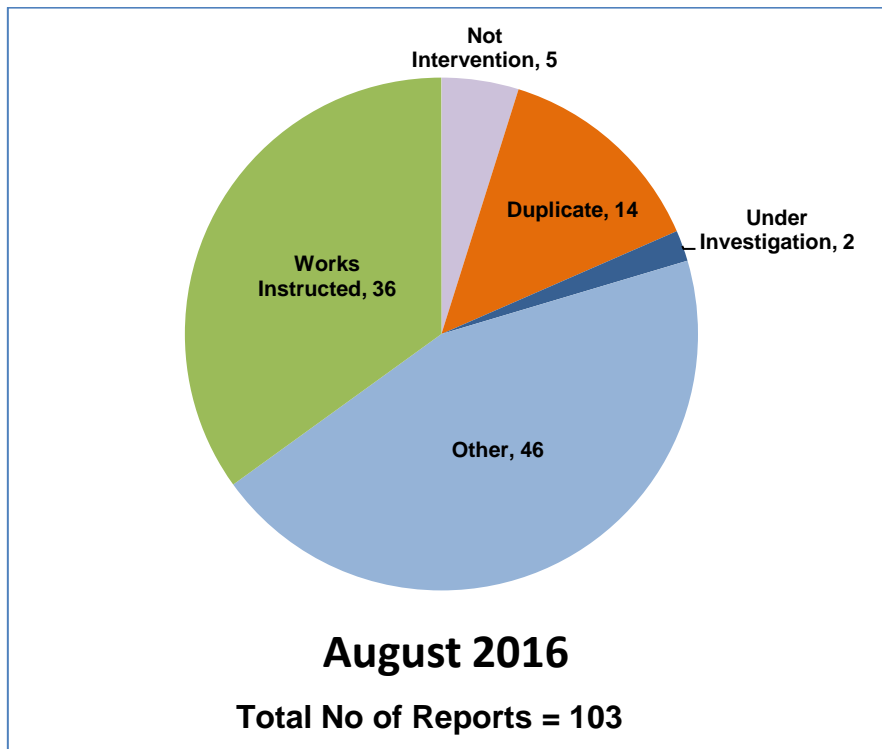
### Customer reporting methods in your area



### Customer reports in your area for the month of August 2016



### Actions following recent reports in your area

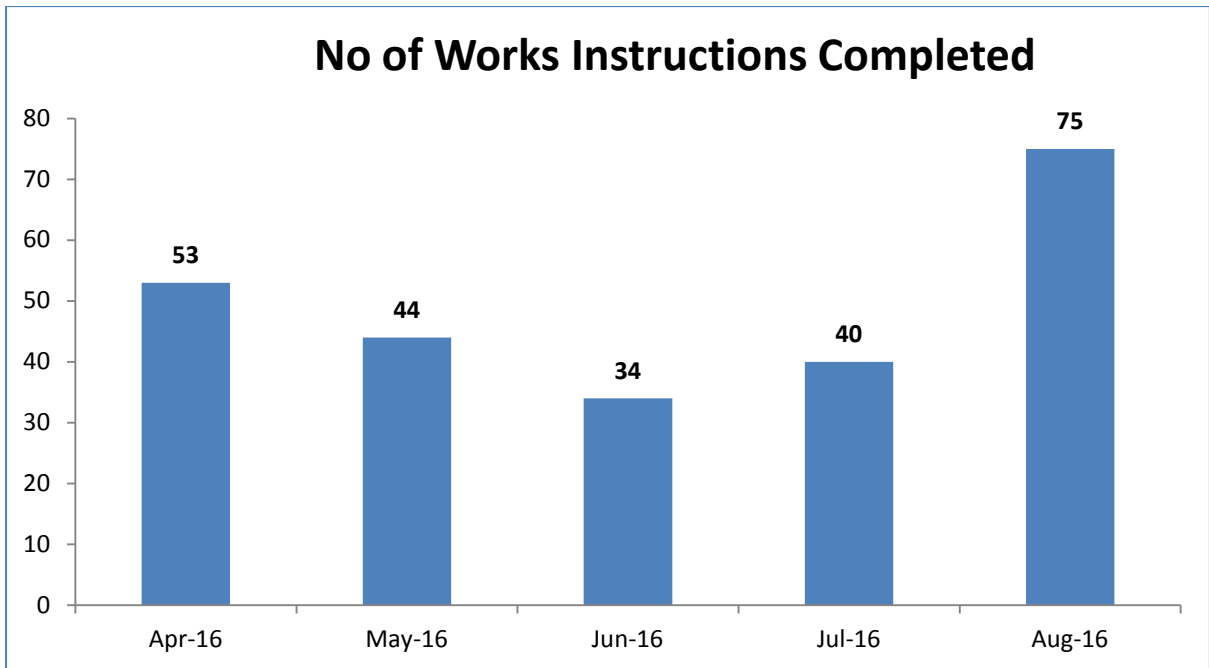


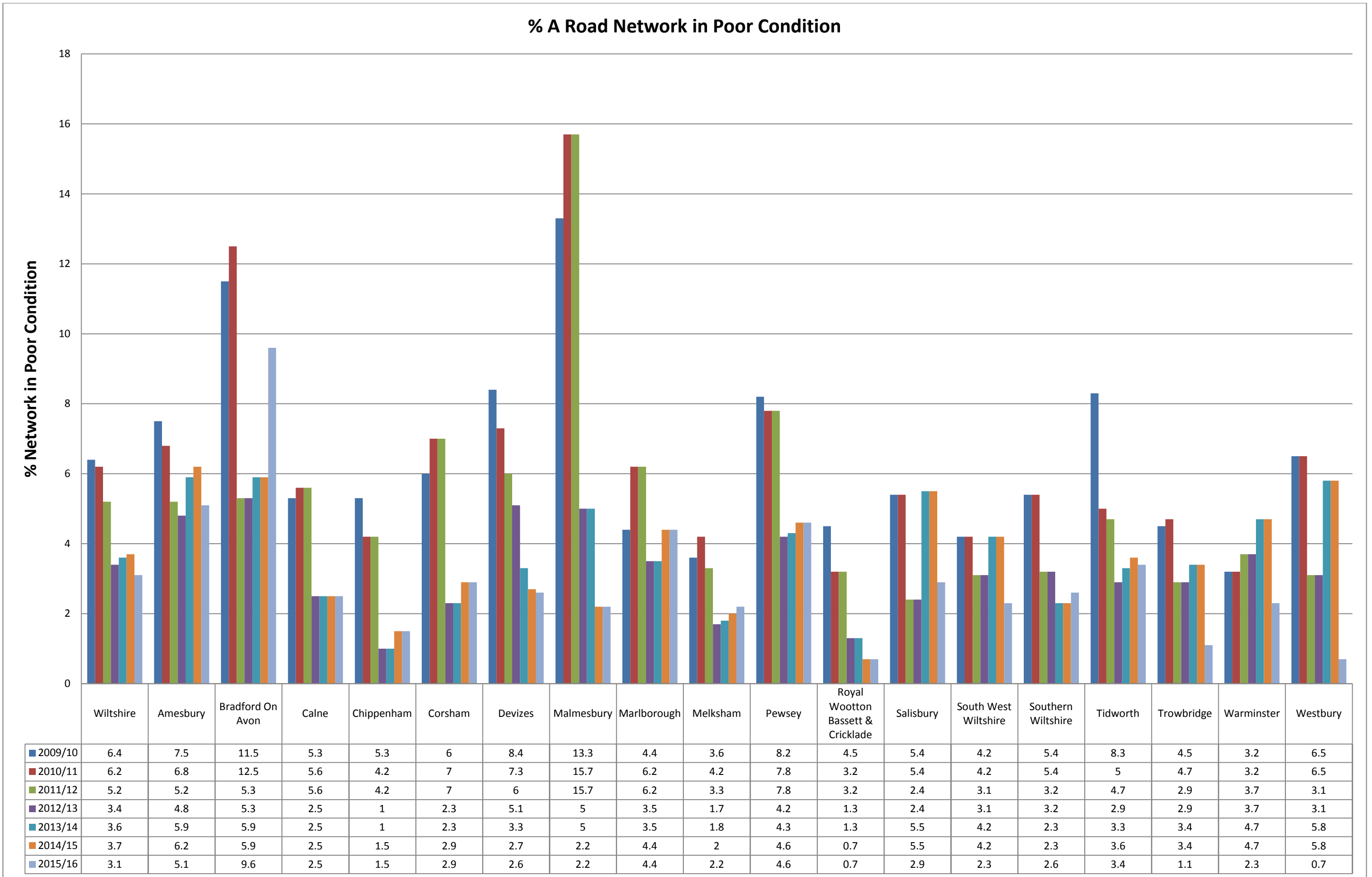


## Action definitions

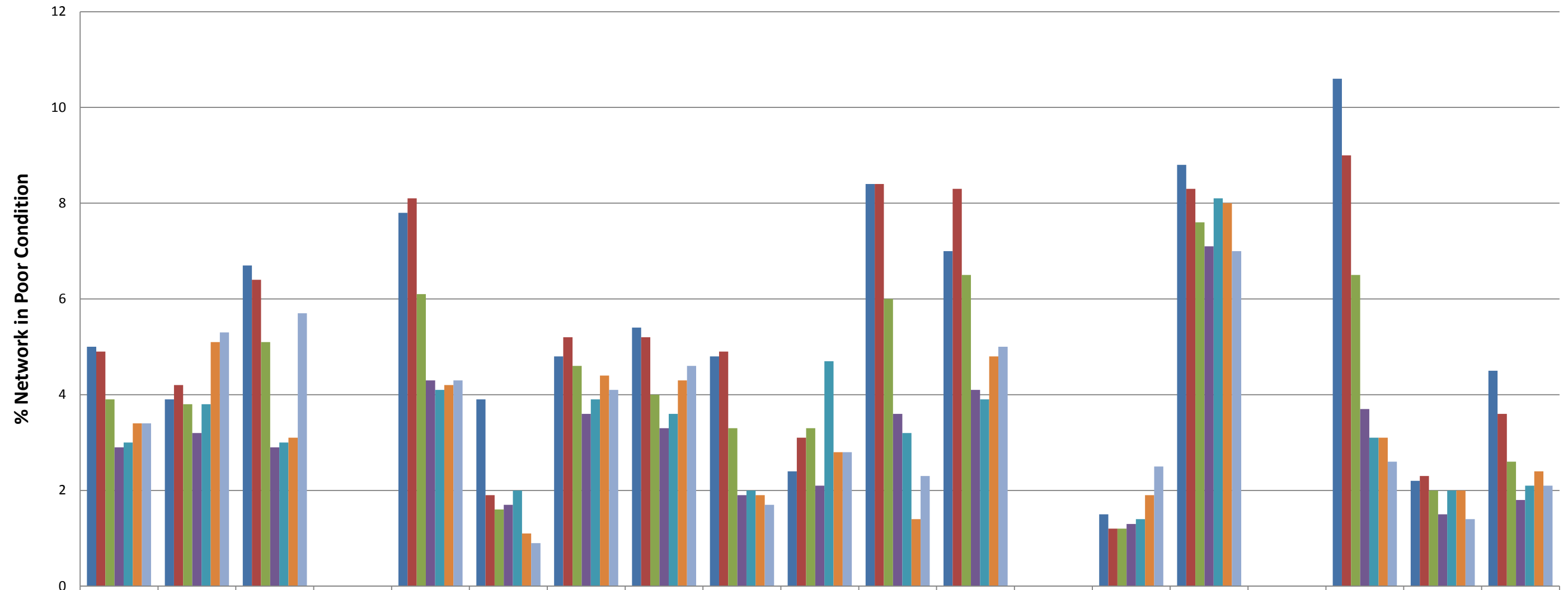
1. **Not Intervention** – the technician has attended site and classified the defect as not meeting intervention levels as per the Highway Inspection Manual 2013 or in the case of streetscene reports, service level agreements.
2. **Duplicate** – a report has already been received in relation to this issue and a works instruction has previously been passed to the contractor to undertake a repair/carry out the necessary works.
3. **Under Investigation** – this issue is currently with a Highways technician or engineer – they may be awaiting information from the customer or the issue requires further investigation e.g. wet weather inspection, drainage survey, exploratory excavation, ownership query.
4. **Discretionary works** – this issue is not a highway safety issue and has been identified as one which falls within the remit of the parish steward scheme.
5. **Other** – the issue has been identified as one which does not require any action by Local Highways. This could be for a number of reasons –
  - the report has been cancelled by the user,
  - there is insufficient information provided to assess the issue and the customer has not provided contact details,
  - the issue is not the responsibility of Wiltshire Council e.g. un-adopted highway, gas/electricity/telephone/water/cable company, Highways England, housing association,
  - the technician attended site and nothing was found at the stated location
  - the issue has been passed to another service within Wiltshire Council e.g. rights of way, bridges.
6. **Works Instructed** – the technician has assessed the issue as requiring works to be carried out and has either dealt with the issue personally or has referred it to the contractor for repair.

Highway defects completed in your area in recent months



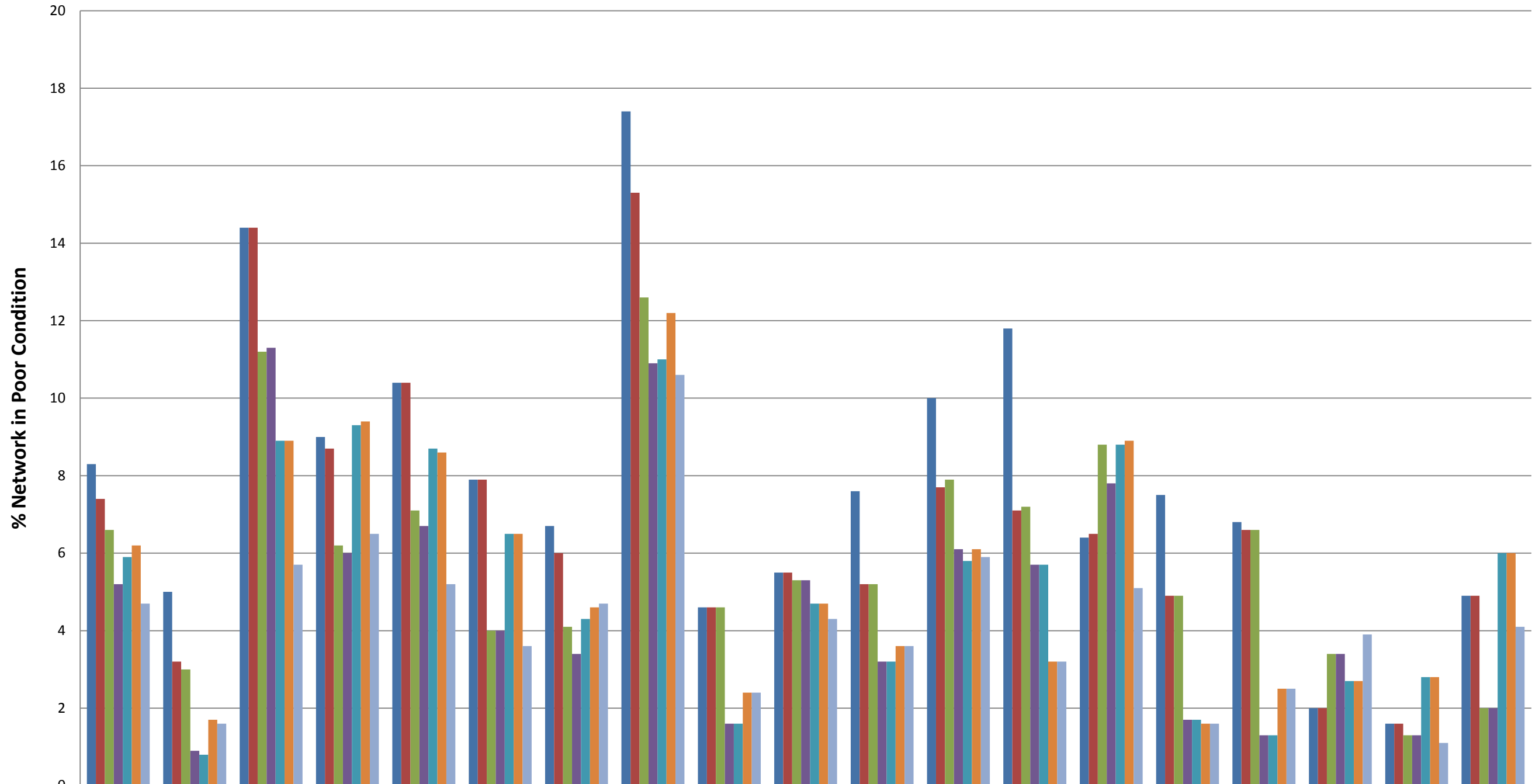


### % B Road Network in Poor Condition



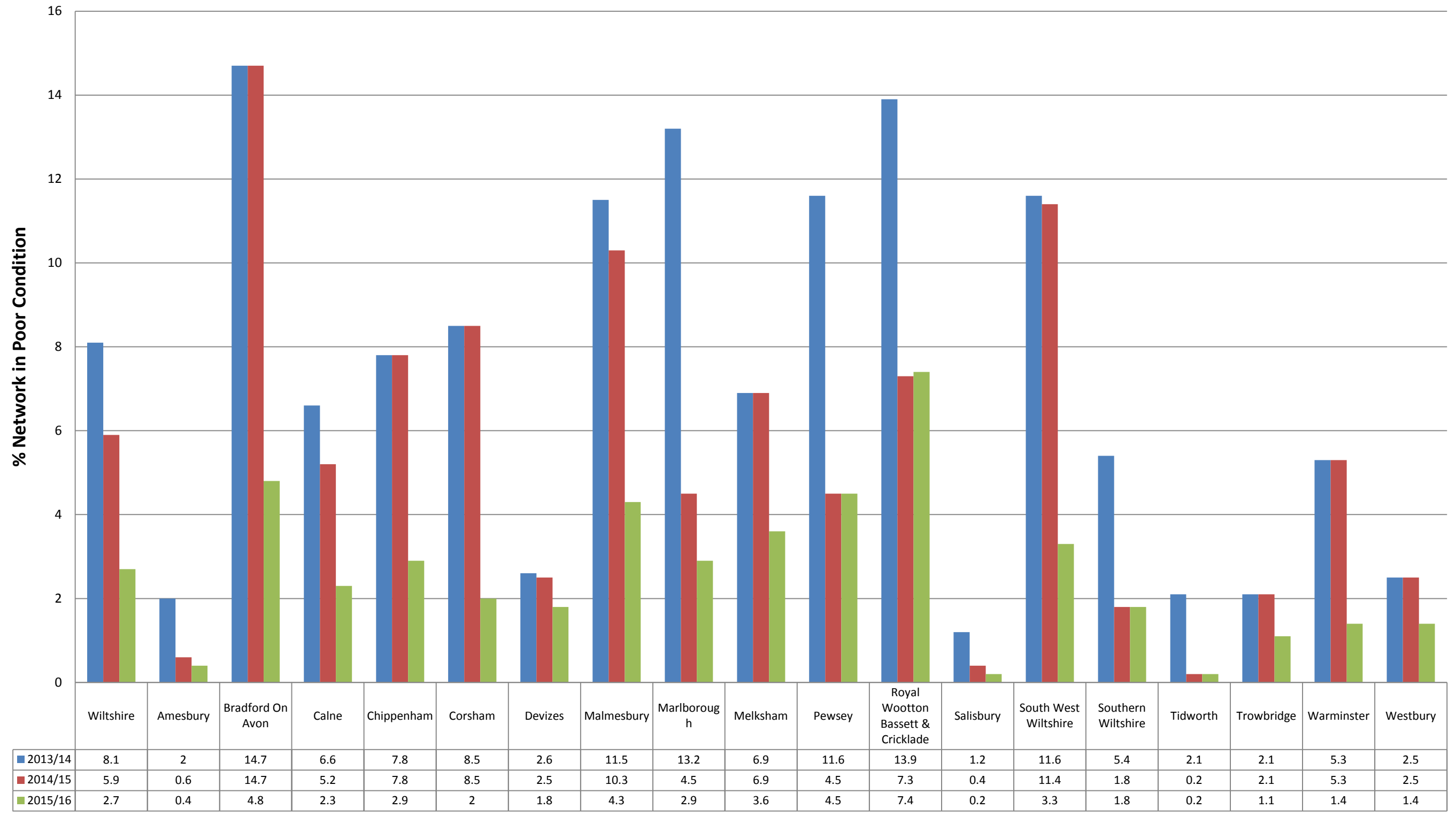
	Wiltshire	Amesbury	Bradford On Avon	Calne	Chippenham	Corsham	Devizes	Malmesbury	Marlborough	Melksham	Pewsey	Royal Wootton Bassett & Cricklade	Salisbury	South West Wiltshire	Southern Wiltshire	Tidworth	Trowbridge	Warminster	Westbury
■ 2009/10	5	3.9	6.7	0	7.8	3.9	4.8	5.4	4.8	2.4	8.4	7	0	1.5	8.8	0	10.6	2.2	4.5
■ 2010/11	4.9	4.2	6.4	0	8.1	1.9	5.2	5.2	4.9	3.1	8.4	8.3	0	1.2	8.3	0	9	2.3	3.6
■ 2011/12	3.9	3.8	5.1	0	6.1	1.6	4.6	4	3.3	3.3	6	6.5	0	1.2	7.6	0	6.5	2	2.6
■ 2012/13	2.9	3.2	2.9	0	4.3	1.7	3.6	3.3	1.9	2.1	3.6	4.1	0	1.3	7.1	0	3.7	1.5	1.8
■ 2013/14	3	3.8	3	0	4.1	2	3.9	3.6	2	4.7	3.2	3.9	0	1.4	8.1	0	3.1	2	2.1
■ 2014/15	3.4	5.1	3.1	0	4.2	1.1	4.4	4.3	1.9	2.8	1.4	4.8	0	1.9	8	0	3.1	2	2.4
■ 2015/16	3.4	5.3	5.7	0	4.3	0.9	4.1	4.6	1.7	2.8	2.3	5	0	2.5	7	0	2.6	1.4	2.1

### % C Road Network in Poor Condition



	Wiltshire	Amesbury	Bradford On Avon	Calne	Chippenham	Corsham	Devizes	Malmesbury	Marlborough	Melksham	Pewsey	Royal Wootton Bassett & Cricklade	Salisbury	South West Wiltshire	Southern Wiltshire	Tidworth	Trowbridge	Warminster	Westbury
■ 2009/10	8.3	5	14.4	9	10.4	7.9	6.7	17.4	4.6	5.5	7.6	10	11.8	6.4	7.5	6.8	2	1.6	4.9
■ 2010/11	7.4	3.2	14.4	8.7	10.4	7.9	6	15.3	4.6	5.5	5.2	7.7	7.1	6.5	4.9	6.6	2	1.6	4.9
■ 2011/12	6.6	3	11.2	6.2	7.1	4	4.1	12.6	4.6	5.3	5.2	7.9	7.2	8.8	4.9	6.6	3.4	1.3	2
■ 2012/13	5.2	0.9	11.3	6	6.7	4	3.4	10.9	1.6	5.3	3.2	6.1	5.7	7.8	1.7	1.3	3.4	1.3	2
■ 2013/14	5.9	0.8	8.9	9.3	8.7	6.5	4.3	11	1.6	4.7	3.2	5.8	5.7	8.8	1.7	1.3	2.7	2.8	6
■ 2014/15	6.2	1.7	8.9	9.4	8.6	6.5	4.6	12.2	2.4	4.7	3.6	6.1	3.2	8.9	1.6	2.5	2.7	2.8	6
■ 2015/16	4.7	1.6	5.7	6.5	5.2	3.6	4.7	10.6	2.4	4.3	3.6	5.9	3.2	5.1	1.6	2.5	3.9	1.1	4.1

### % Unclassified Road Network in Poor Condition



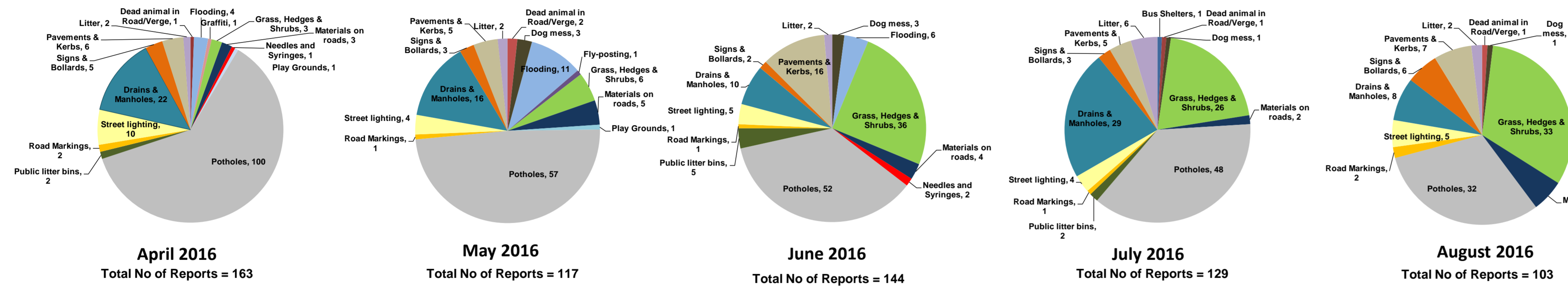
# Appendix B: My Wiltshire Statistics



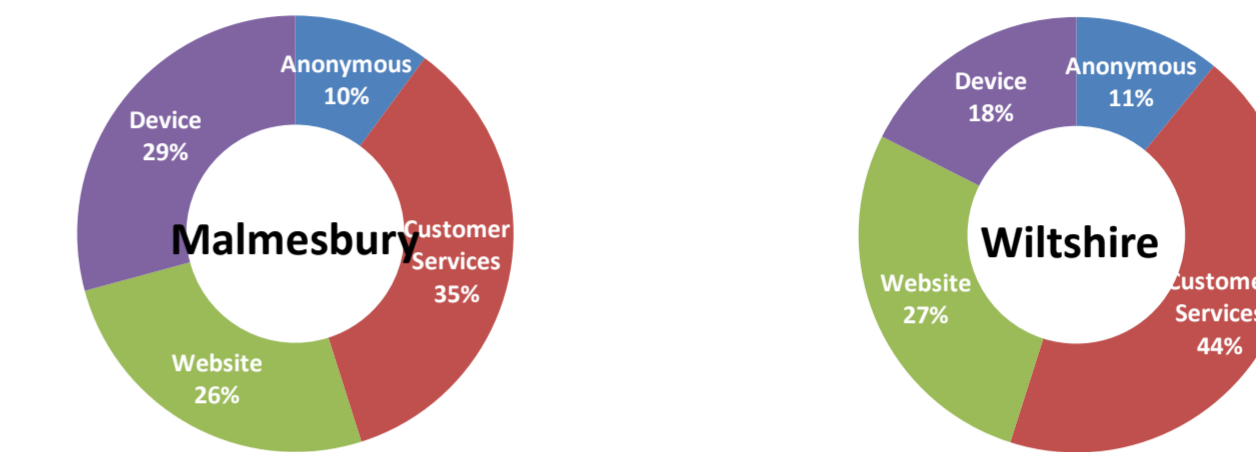
## Malmesbury Area Board



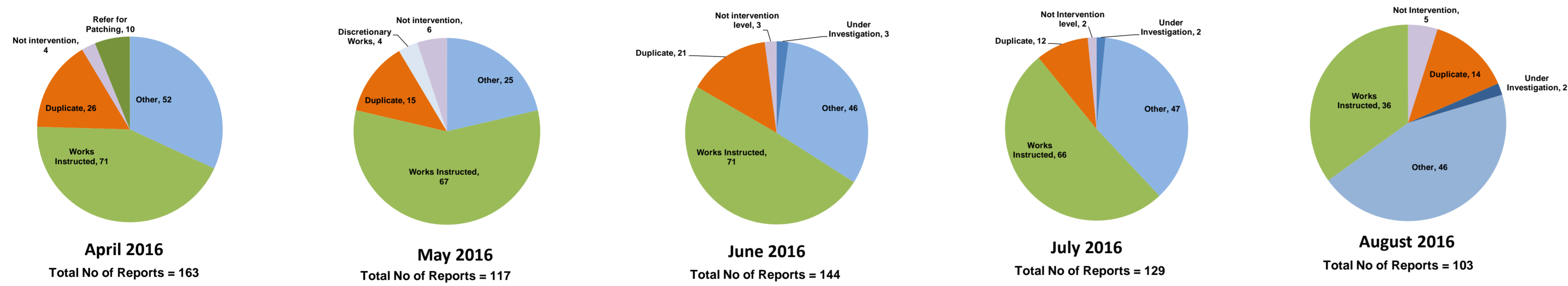
### Customer Reported Issues



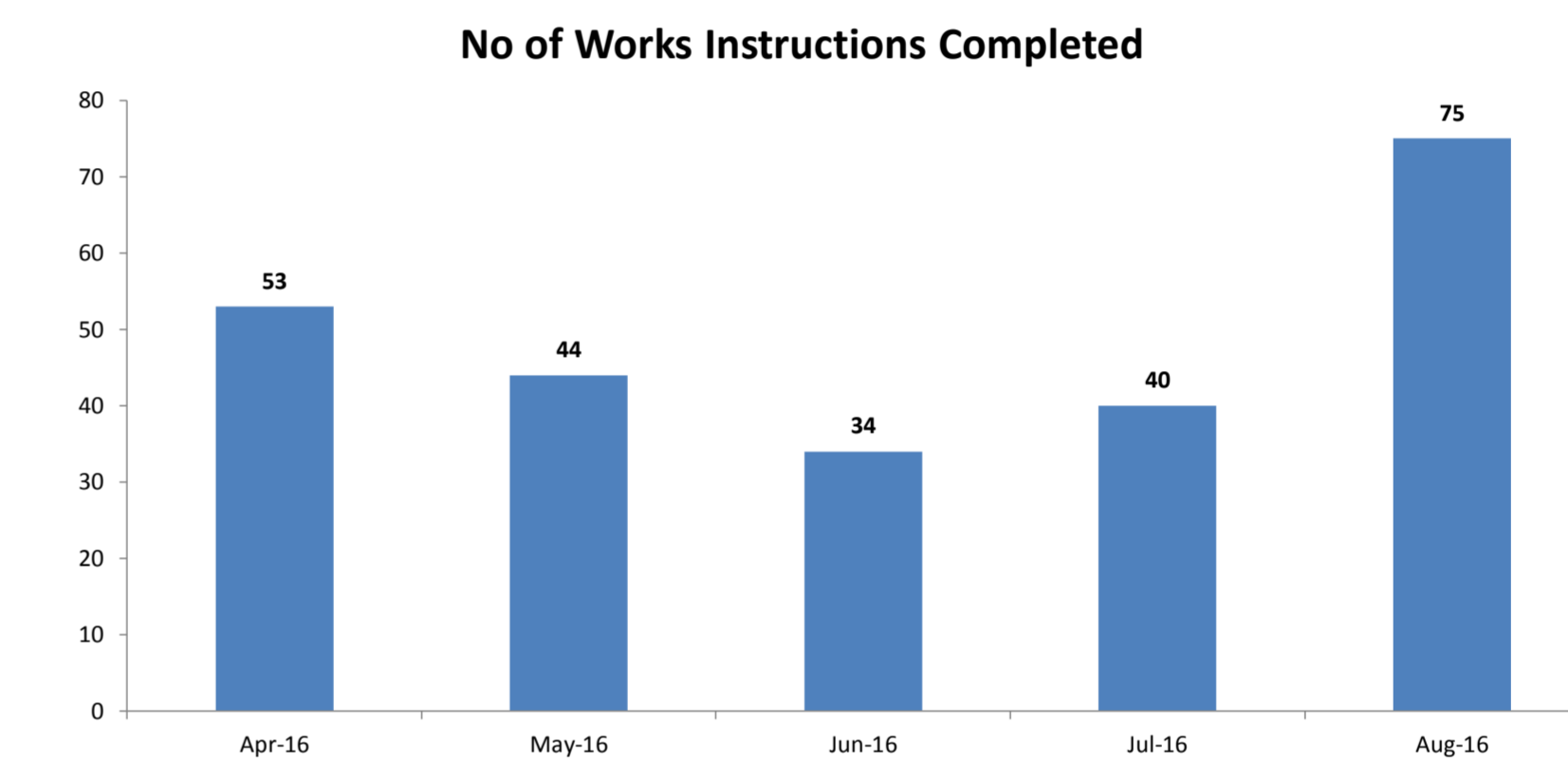
### Reporting Channels



### Customer Call Outcomes



### Completed in Month



### Safety Inspections

